
PUSH BUTTON PUCK RANGE



PUSH BUTTON PUCK RANGE



SUITABLE USES

RETAIL & COMMERCIAL – MERCHANDISING WALL AND FLOOR UNITS, FASHION APPAREL, ACCESSORIES, SHOES, HANGING AND SHELVING, HIGHLIGHT DISPLAYS, FASHION HOOKS AND HANGRAILS.



PUSH BUTTON PUCK RANGE

PUSH BUTTON PUCK



MK-PUCKPB001

Push Button Puck, includes locking nut to secure onto panel. Holds Ø 19mm tube.

Overall size – Ø 33mm x 46mm deep.

Machined Aluminium.

PUSH BUTTON PUCK – 150MM STRAIGHT ARM



MK-PPSA150C

Push Button Puck Straight Arm.

150mm in length.

Polished Chrome finish.

PUSH BUTTON PUCK – 300MM STRAIGHT ARM



MK-PPSA300C

Push Button Puck Straight Arm / Shelf Bracket.

300mm in length.

Polished Chrome finish.



PUSH BUTTON PUCK RANGE

PUSH BUTTON PUCK – 350MM STRAIGHT ARM



MK-PPSA350C

Push Button Puck Straight Arm /
Shelf Bracket.

350mm in length.

Polished Chrome finish.

PUSH BUTTON PUCK – 300MM WATERFALL ARM



MK-PPWA300C

Push Button Puck Waterfall Arm.

300mm in length.

Polished Chrome finish.

PUSH BUTTON PUCK STEPPED ARM



MK-PPST400C

Push Button Puck Stepped Arm.

400mm in length.

Polished Chrome finish.

PUSH BUTTON PUCK RANGE

PUSH BUTTON PUCK TICKET HOLDER



MK-PPTH100C

Push Button Ticket Holder to suspend posters / tickets. 100mm in length,.

Requires a 6mm diameter hole through panel.

Polished Chrome finish.

PUSH BUTTON PUCK FRONT HANG RAIL



MK-PPFR900C

Push Button Puck Front hang rail. 900mm wide x 35mm deep. Fits into puck at 600mm wide centres.

Polished Chrome finish.

PUSH BUTTON PUCK SIDE HANG RAIL



MK-PPSR900C

Push Button Puck Side Hang Rail. 900mm wide x 300mm deep. Fits into pucks at 600mm wide centres.

Polished Crome finish.



PUSH BUTTON PUCK RANGE

PUSH BUTTON PUCK O-RINGS



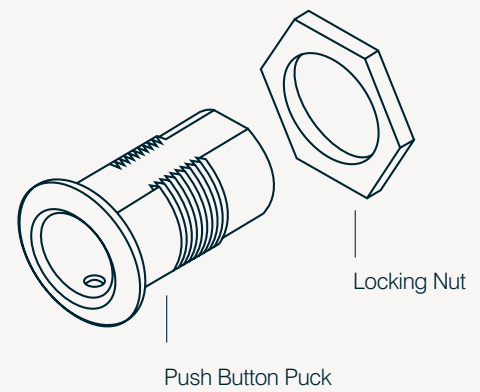
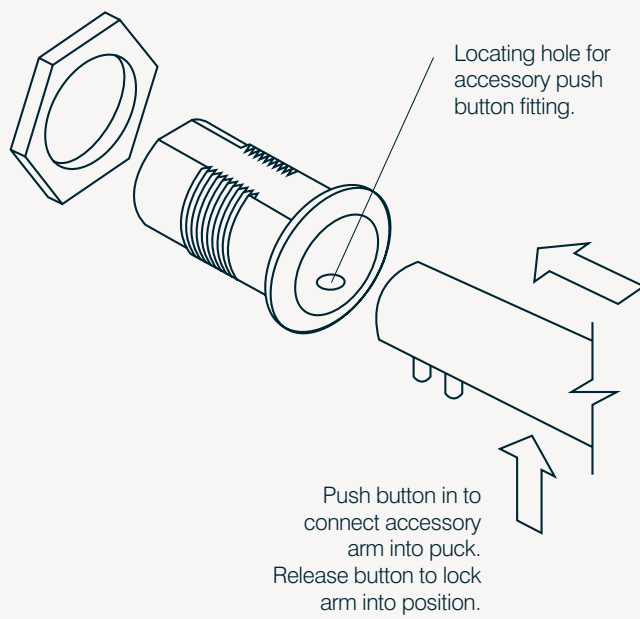
MK-PKOR

Black rubber o-rings for Push Button Puck Arms when used to hold glass or acrylic shelves.

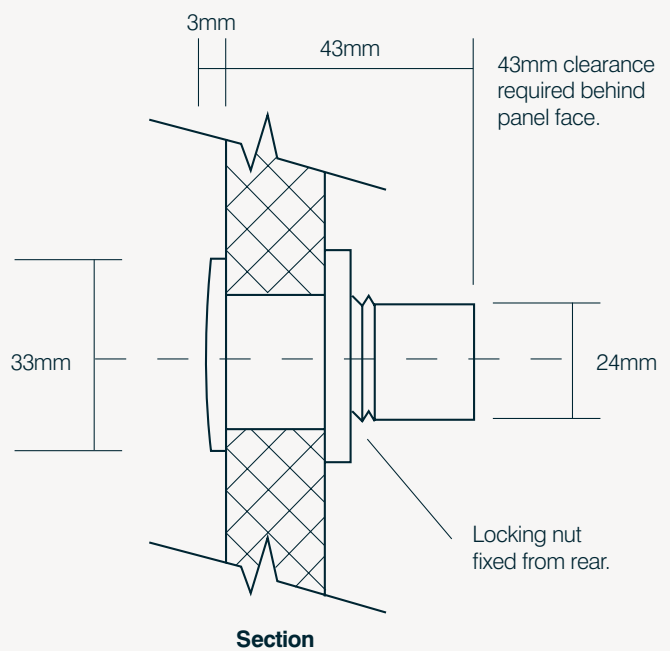
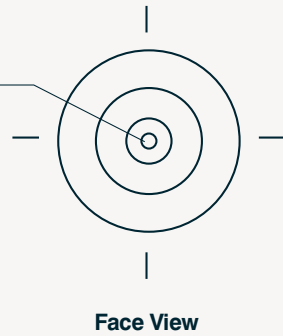
Sold as a pair.



PUSH BUTTON PUCK INSTALLATION



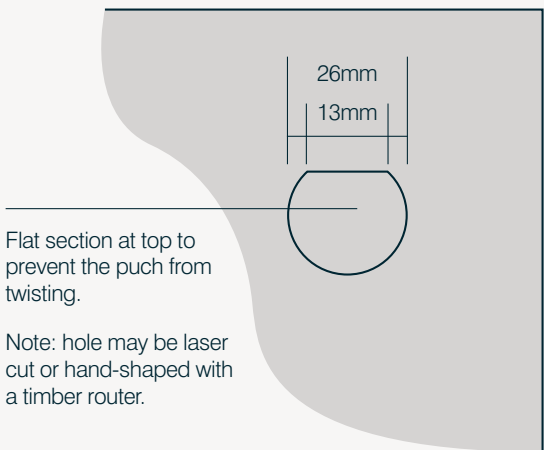
Countersunk
Ø 4mm hole through for
additional screw fixing.



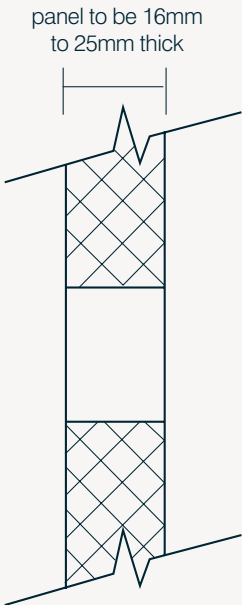


PUSH BUTTON PUCK INSTALLATION

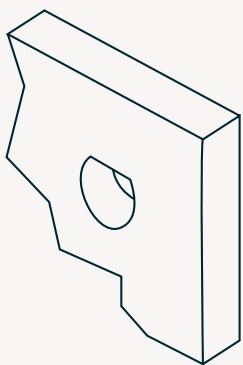
Hole Detail - Method A



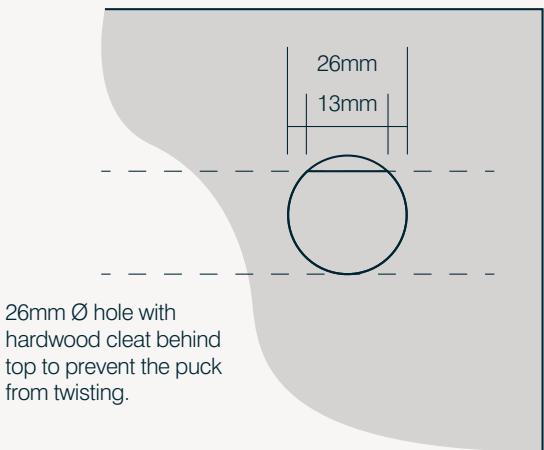
Face View



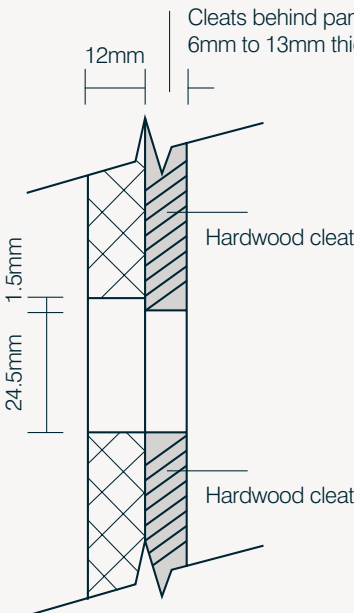
Section



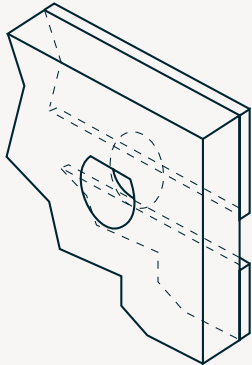
Hole Detail - Method B



Face View



Section



MADERETAIL.COM.AU

HEAD OFFICE

17 COMMERCIAL DRIVE
LYNBROOK VICTORIA AUSTRALIA 3975
T: +61 3 9799 3000 F: +61 3 9799 3011
E: INFO@MADERETAIL.COM.AU

SHOWROOM & SALES

407 SWAN STREET
RICHMOND VICTORIA AUSTRALIA 3121
T: +61 3 9600 4938
E: INFO@MADERETAIL.COM.AU