

60MM PITCH WALL SYSTEM



60MM PITCH WALL SYSTEM



SUITABLE USES

FASHION APPAREL, GENERAL PRODUCT
MERCHANDISING, HOMEWARES AND
ACCESSORIES, SPORTING GOODS AND
HOME INTERIORS.



60MM PITCH WALL SYSTEM

WALL POST – WHITE



MK-AU016WMW

Slotted Wall Posts in 60mm pitch.
Mounts to walls to create bays for merchandising. Various accessory options are available.

White Powder Coat finish.

Post size:
3000mm H x 30mm W x 30mm D.

WALL POST – BLACK



MK-AU016WMB

Slotted Wall Posts in 60mm pitch.
Mounts to walls to create bays for merchandising. Various accessory options are available.

Black Powder Coat finish.

Post size:
3000mm H x 30mm W x 30mm D.

WALL POST – STAINLESS STEEL



MK-AU016WMSS

Slotted Wall Posts in 60mm pitch.
Mounts to walls to create bays for merchandising. Various accessory options are available.

Stainless Steel finish.

Post size:
3000mm H x 30mm W x 30mm D.

FRONT

REAR

60MM PITCH
SLOT

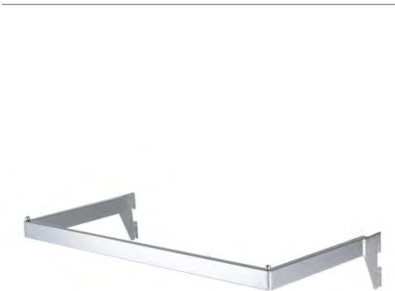
REAR FIXING
HOLES

3000mm

ADJUSTABLE
FOOT

60MM PITCH WALL SYSTEM

SIDE HANG RAIL – 600MM

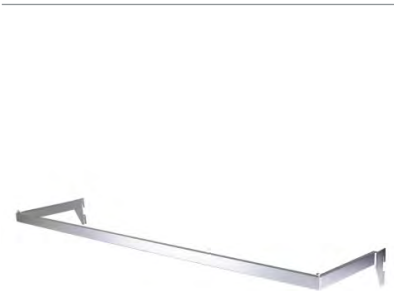


MK-3GSL033SC

For side hanging apparel.
Fits into 60mm pitch Wall Posts
positioned at 600mm centres.
Satin Chrome finish.

Size: 600mm W x 288mm D.

SIDE HANG RAIL – 1200MM

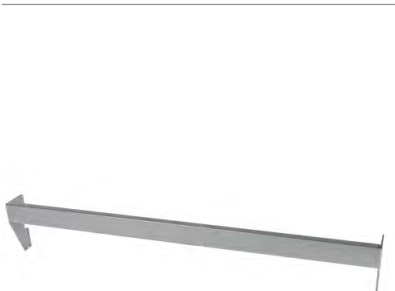


MK-3GSL029SC

For side hanging apparel.
Fits into 60mm pitch Wall Posts
positioned at 1200mm centres.
Satin Chrome finish.

Size: 1200mm W x 288mm D.

FRONT HANG RAIL – 600MM



MK-3GSL032SC

Back bar fits into 60mm pitch Wall Posts
positioned at 600mm centres.
Use with Forward Face Arm and
Stepped Arm for front hanging, or
Prong Hooks for hang sell displays.
Satin Chrome finish.

Size: 600mm W x 40mm D.

60MM PITCH WALL SYSTEM

FRONT HANG RAIL – 1200MM



MK-3GSL028SC

Back bar fits into 60mm pitch Wall Posts positioned at 1200mm centres.

Use with Forward Face Arm and Stepped Arm for front hanging, or Prong Hooks for hang sell displays.

Satin Chrome finish.

Size: 1200mm W x 40mm D.

FORWARD FACE ARM – 200MM



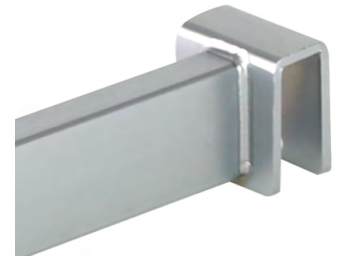
MK-3GSL007SC

Sits over Front Hang Rail to create forward faced hanging of merchandise.

Satin Chrome finish.

Size: 200mm L.

FORWARD FACE ARM – 350MM



MK-3GSL006SC

Sits over Front Hang Rail to create forward faced hanging of merchandise.

Satin Chrome finish.

Size: 350mm L.



60MM PITCH WALL SYSTEM

STEPPED ARM – 350MM

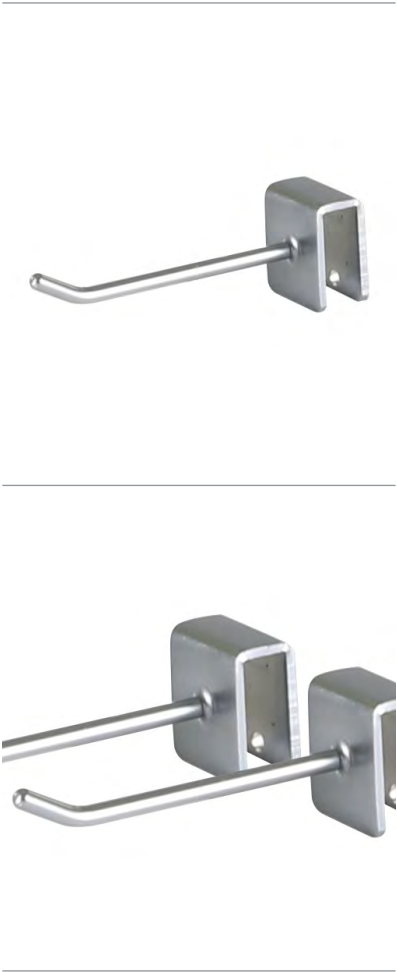


MK-3GSL012SC

Sits over Front Hang Rail to create forward faced hanging of merchandise on 2 levels.
Satin Chrome finish.

Size: 350mm L.

PRONG HOOK – 100MM

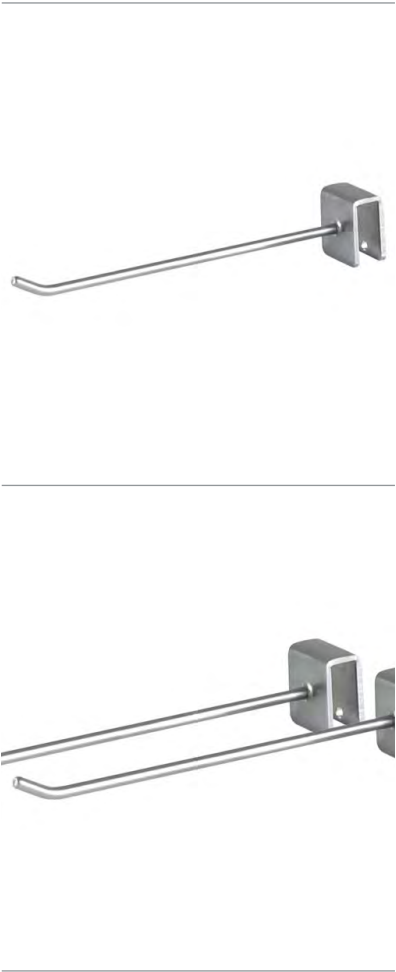


MK-3GSL008SC

Use with Front Hang Rail for hang sell of smaller accessory items.
Satin Chrome finish.

Size: 100mm L.

PRONG HOOK – 200MM



MK-3GSL009SC

Use with Front Hang Rail for hang sell of smaller accessory items.
Satin Chrome finish.

Size: 200mm L.

60MM PITCH WALL SYSTEM

SHELF BRACKET SET – 300MM



MK-3GSB101SC

Fits into 60mm pitch Wall Posts for shelving displays. Suits 300mm deep timber shelf with thickness of 18-25mm.

Screws included. Timber shelf not included.
Sold in pairs.

Satin Chrome finish.

Size: 300mm D x 25mm H.

SHELF BRACKET SET – 400MM



MK-3GSB102SC

Fits into 60mm pitch Wall Posts for shelving displays. Suits 400mm deep timber shelf with thickness of 18-25mm.

Screws included. Timber shelf not included.
Sold in pairs.

Satin Chrome finish.

Size: 400mm D x 25mm H.

60MM PITCH WALL SYSTEM

WALL BAY LAYOUT EXAMPLES

Bays can be merchandised with 60mm pitch accessories to create the required story, and can be moved accordingly.

Wide slot allows accessories to sit side by side.

Configuration shows a combination of 600mm and 1200mm centres.



Posts are usually installed at 600mm and/or 1200mm centres.

Other bay sizes can be applied depending on hardware to be used.

Configuration shows bays at 600mm centres.



MADERETAIL.COM.AU

HEAD OFFICE

17 COMMERCIAL DRIVE
LYNBROOK VICTORIA AUSTRALIA 3975
T: +61 3 9799 3000 F: +61 3 9799 3011
E: INFO@MADERETAIL.COM.AU

SHOWROOM & SALES

407 SWAN STREET
RICHMOND VICTORIA AUSTRALIA 3121
T: +61 3 9600 4938
E: INFO@MADERETAIL.COM.AU